

## PROGRAM PURPOSE

Medical coding is a fully online, nine-month certificate program that prepares students for the rapidly expanding field of medical coding. Instruction focuses on developing an understanding of the language of medicine and the ability to apply it to professional coding standards. The curriculum concentrates on the areas of anatomy and physiology, medical terminology, pharmacology, and clinical classification systems.

Coders are required to extract medical documentation from a patient's chart and correlate the diagnosis and procedures performed into numerical code numbers. This type of work is done in all healthcare facilities. The student gains knowledge and practice in computer software programs such as encoders and electronic medical records systems, allowing students to have real-world, hands-on applications of coding practice.

*Upon successful completion of the program, graduates are eligible for certification as a Coding Associate (CCA) through the American Health Information Management Association (AHIMA). With some experience they become eligible for additional national certification examinations through AHIMA or the American Academy of Professional Coders.*

## CAREER OPPORTUNITIES

Graduates are prepared to work in various healthcare & employment settings, including:

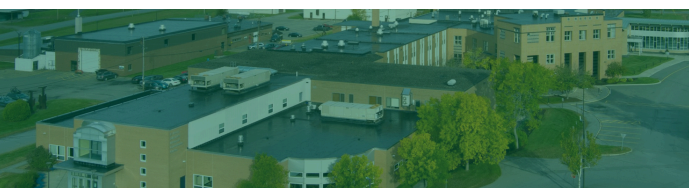
- Hospitals
- Physician offices
- Home health agencies
- Insurance companies
- Computer software companies
- Clinics
- Long-term care facilities
- Government agencies
- Consulting firms



## APPLICATION PROCEDURE

*The following procedures constitute the admissions process:*

- 1 Submit an NMCC application.
- 2 Submit official high school transcript and/or HiSET/GED scores (current senior's ranking period grades).
- 3 Official college transcripts for applicants who have attended other post-secondary schools.
- 4 If SAT scores are not available, placement testing may be required.
- 5 Meet with an Admissions Counselor.
- 6 A campus tour is highly recommended.



## GET IN TOUCH

207-768-2785

www.nmcc.edu  
nmccadmissions@maineccc.edu

33 Edgemont Drive  
Presque Isle, ME 04769

**MEDICAL CODING**  
2024-2025  
Certificate Program

| <b>Pre-requisites</b>  |   |                   |   | <b>C</b>  | <b>L</b>  | <b>CR</b> |
|------------------------|---|-------------------|---|-----------|-----------|-----------|
| >                      | <b>ALH 220</b>  | <b>(HLTH 220)</b> | <b>Medical Terminology</b>  | <b>3</b>  | <b>0</b>  | <b>3</b>  |
| >                      | <b>BIO 114</b>  | <b>(BIOL 105)</b> | <b>Human Biology with Lab</b>                                       | <b>3</b>  | <b>2</b>  | <b>4</b>  |
| >                      | <b>HIT 100</b>  | <b>(MEDO 100)</b> | <b>Introduction to Medical Coding</b>                               | <b>1</b>  | <b>0</b>  | <b>1</b>  |
|                        |   |                   |   | <b>7</b>  | <b>2</b>  | <b>8</b>  |
| <b>First Semester</b>  |   |                   |   | <b>C</b>  | <b>L</b>  | <b>CR</b> |
|                        | ENG 111   | (ENGL 101)        | English Composition   | 3         | 0         | 3         |
| >                      | <b>HIT 112</b>  | <b>(MEDO 112)</b> | <b>Medical Law, Reimbursement &amp; Delivery Systems</b>            | <b>3</b>  | <b>0</b>  | <b>3</b>  |
| >                      | <b>HIT 114</b>  | <b>(MEDO 114)</b> | <b>Clinical Classification Systems with Lab I</b>                   | <b>2</b>  | <b>2</b>  | <b>3</b>  |
| >                      | <b>HIT 116</b>  | <b>(MEDO 116)</b> | <b>Clinical Classification Systems with Lab II</b>                  | <b>2</b>  | <b>2</b>  | <b>3</b>  |
|                        |   |                   |   | <b>10</b> | <b>4</b>  | <b>12</b> |
| <b>Second Semester</b> |   |                   |   | <b>C</b>  | <b>L</b>  | <b>CR</b> |
| >                      | <b>HIT 115</b>  | <b>(MEDO 115)</b> | <b>Clinical Applications of Pathophysiology &amp; Pharmacology</b>  | <b>3</b>  | <b>0</b>  | <b>3</b>  |
| >                      | <b>HIT 214</b>  | <b>(MEDO 214)</b> | <b>ICD-10-CM/PCS Coding Part II</b>                                 | <b>3</b>  | <b>0</b>  | <b>3</b>  |
| >                      | <b>HIT 216</b>  | <b>(MEDO 216)</b> | <b>CPT Coding Part II</b>   | <b>3</b>  | <b>0</b>  | <b>3</b>  |
|                        | MAT 116   | (MATH 112)        | Quantitative Reasoning (or MAT 125)                                 | 3         | 0         | 3         |
|                        |   |                   |   | <b>12</b> | <b>0</b>  | <b>12</b> |
| <b>Third Semester</b>  |   |                   |   | <b>C</b>  | <b>L</b>  | <b>CR</b> |
| >                      | <b>HIT 219</b>  | <b>(MEDO 219)</b> | <b>Medical Coding Internship/ Professional Practical Experience</b> | <b>0</b>  | <b>60</b> | <b>2</b>  |
| <b>Total Required</b>  |   |                   |   |           |           | <b>34</b> |
| >                      | <b>Major courses; a minimum grade of "C" or 2.0 is required</b> |                   |   |           |           |           |
|                        | <i>Key: C=Class hours; L=Laboratory; CR=Credit hours</i>        |                   |   |           |           |           |



The Medical Coding Certificate Program at NMCC has earned approval from the AHIMA Professional Certificate Approval Program (PCAP). This designation recognizes that our program has undergone a rigorous peer review process and meets the national standards required for entry-level coding professionals.