



PROGRAM PURPOSE

NMCC's nursing program is designed to prepare students to become registered nurses. Students develop the necessary knowledge and skills to provide nursing care in various capacities throughout a patient's lifetime. Guided learning opportunities in local hospitals, the campus lab, and the state-of-the-art simulation center provide students with valuable hands-on experiences that complement the classroom curriculum.

Candidates who are graduates from approved nursing programs are provided an opportunity for advanced standing. Students with successful prior college courses may receive priority, providing all other minimum standards are met. Students may be giving only one opportunity to reenter the program after having failed to complete it previously.

CAREER OPPORTUNITIES

Graduates will find employment opportunities as an integral team member in a variety of healthcare settings.

For graduates interested in continuing their education by pursuing a bachelor of science in nursing degree, NMCC has transfer agreements in place with four-year institutions. By completing the first two years at NMCC students are able to graduate with less debt and are prepared to take advantage of online programs.

The Associate Nursing Program at NMCC is accredited by the Accreditation Commission for Education in Nursing (ACEN), located at 3390 Peachtree Road NE, Suite 1400, Atlanta, GA 30326, and approved by the Maine State Board of Nursing. The ACEN Board of Commissioners recently granted Continuing Accreditation status to the Associate Nursing Program.

Please note that the Maine State Board of Nursing reserves the right to deny licensure based on criminal history record information related to convictions as defined in Title V Chapter 341 Section 5301 Subsection.

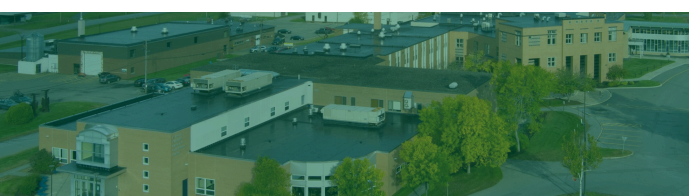


APPLICATION PROCEDURE

The following procedures constitute the admissions process:

- 1 Submit an NMCC application.
- 2 Submit official high school transcript and/or HiSET/GED scores (current senior's ranking period grades).
- 3 Official college transcripts for applicants who have attended other post-secondary schools.
- 4 Two confidential recommendations from *professional or academic sources*.
- 5 Supplemental Questionnaire.
- 6 Personal interview with the Nursing Admissions Committee.
- 7 TEAS (Test of Essential Academic Skills) scores.
- 8 A campus tour is highly recommended.

Note: Criminal history record search will be completed by NMCC personnel. Prior criminal convictions may preclude program admission and licensure.



GET IN TOUCH

207-768-2785

www.nmcc.edu
nmccadmissions@mainecc.edu

33 Edgemont Drive
Presque Isle, ME 04769

NURSING

2024-2025

Associate in Science Degree Program

Pre-requisites				C	L	CR
>	BIO 201	(BIOL 215)	Anatomy & Physiology with Lab I	3	2	4
	ENG 111	(ENGL 101)	English Composition	3	0	3
	MAT 116	(MATH 112)	Quantitative Reasoning	3	0	3
				9	2	10

*Prerequisites for admission to the two-year Nursing program. Credit applied toward degree requirements.

The following must be successfully completed prior to entering the program (or concurrently for students admitted directly from high school).

First Semester				C	L	CR
>	ALH 124	(HLTH 124)	Health & Safety Compliance*	1	0	1
>	BIO 211	(BIOL 230)	Anatomy & Physiology with Lab II	3	2	4
	NUR 100	(NURS 100)	Nursing Program Success	1	0	1
>>	NUR 117	(NURS 117)	Nutrition**	3	0	3
>>	NUR 128	(NURS 128)	Foundations of Nursing	4	0	4
>>	NUR 129	(NURS 129)	Clinical Practicum I Geriatric Population	0	9	3
				12	11	16

BIO 201 Anatomy & Physiology I w/ Lab
ENG 111 English Composition
MAT 116 Quantitative Reasoning
(or MAT 125 College Algebra)

*ALH 124 must be passed within 12 months of enrollment into NUR 128 and NUR 129

**NUR 115 and NUR 128 and NUR 129 are co-requisites to NUR 130 and NUR 131

Second Semester				C	L	CR
>>	NUR 115	(NURS 115)	Pharmacology for Nurses ***	3	0	3
>>	NUR 130	(NURS 130)	Nursing Across the Lifespan I	4	0	4
>>	NUR 131	(NURS 131)	Clinical Practicum II Across the Lifespan	0	9	3
	PSY 101	(PSYC 100)	General Psychology	3	0	3
				10	9	13

Winter Session				C	L	CR
	NUR 124	(NURS 124)	Role Transition	1	0	1
			(Only required for LPNs entering second semester)			

Third Semester				C	L	CR
>	BIO 218	(BIOL 250)	Microbiology Lecture with Lab	3	2	4
>>	NUR 225	(NURS 225)	Nursing Across the Lifespan II	5	0	5
>>	NUR 228	(NURS 228)	Clinical Practicum III Across the Lifespan	0	12	4
	PSY 207	(PSYC 207)	Developmental Psychology	3	0	3
				11	14	16

Fourth Semester				C	L	CR
	COM 111	(COMM 107)	Speech	3	0	3
>>	NUR 230	(NURS 230)	Nursing Across the Lifespan III	5	0	5
>>	NUR 231	(NURS 231)	Clinical Practicum IV Across the Lifespan	0	12	4
			Humanities Elective	3	0	3
				11	12	15

Total Required **60/ 61**

> *Major courses; a minimum grade of "C" or 2.0 is required*

>> *Major courses; a minimum grade of "C+" or a minimum grade of 77 is required*

Key: C=Class hours; L=Laboratory; CR=Credit hours

