



PROGRAM PURPOSE

NMCC's practical nursing program is designed to prepare students to become licensed practical nurses. Students develop the necessary knowledge and skills to provide nursing care in various capacities throughout a patient's lifetime. Guided learning opportunities in local healthcare facilities, the campus lab, and the state-of-the-art simulation center, provide students with valuable hands-on experiences that complement the classroom curriculum.

For graduates interested in continuing their education by pursuing an associate of science degree in nursing, NMCC has a career pathway in place to assist you in achieving this goal.

Candidates who are graduates from approved practical nursing programs may qualify for advanced standing after 1-year minimum working as a LPN.

Students with successful prior college may receive priority, providing all other minimum standards are met.

CAREER OPPORTUNITIES

Graduates will find employment opportunities in a variety of healthcare settings. Practical nurses are integral members of the healthcare team and will function under direct or indirect supervision of an experienced registered nurse.

The Practical Nursing Program at NMCC is accredited by the Accreditation Commission for Education in Nursing (ACEN), located at 3390 Peachtree Road NE, Suite 1400, Atlanta, GA 30326, and approved by the Maine State Board of Nursing. The most recent accreditation decision made by the ACEN Board of Commissioners for the Practical Nursing Program is initial accreditation. Please note that the Maine State Board of Nursing reserves the right to deny licensure based on criminal history record information related to convictions as defined in Title V Chapter 341 Section 5301 Subsection.

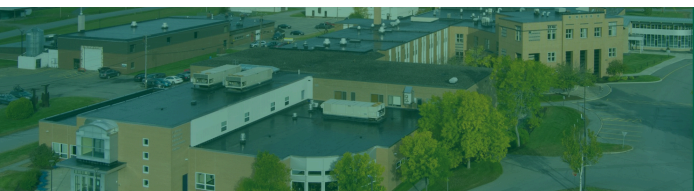


APPLICATION PROCEDURE

The following procedures constitute the admissions process:

- 1** Submit an NMCC application.
- 2** Submit official high school transcript and/or HiSET/GED scores (current senior's ranking period grades).
- 3** Official college transcripts for applicants who have attended other post-secondary schools.
- 4** Two confidential recommendations from *professional or academic sources*.
- 5** Supplemental Questionnaire.
- 6** Personal interview with the Nursing Admissions Committee.
- 7** ACCUPLACER placement testing may be required for proof of college readiness.
- 8** A campus tour is highly recommended.

Note: Criminal history record search will be completed by NMCC personnel. Prior criminal convictions may preclude program admission and licensure.



GET IN TOUCH

207-768-2785

www.nmcc.edu
nmccadmissions@mainecc.edu

33 Edgemont Drive
Presque Isle, ME 04769

PRACTICAL NURSING
2024-2025
Certificate Program

Pre-requisites				C	L	CR
>	ALH 124	(HLTH 124)	Health & Safety Compliance	1	0	1
First Semester				C	L	CR
>	BIO 201	(BIOL 215)	Anatomy & Physiology I with Lab	3	2	4
	ENG 111	(ENGL 101)	English Composition	3	0	3
>>	NUR 101	(NURS 101)	Fundamentals of Practical Nursing	8	0	8
>>	NUR 106	(NURS 106)	Clinical Practicum I Adult/ Geriatric	0	9	3
				14	11	18
Second Semester				C	L	CR
>	BIO 211	(BIOL 230)	Anatomy & Physiology II with Lab	3	2	4
>>	NUR 105	(NURS 105)	Pharmacology for Practical Nursing	3	0	3
>>	NUR 107	(NURS 107)	Practical Nursing Across the Lifespan	8	0	8
>>	NUR 109	(NURS 109)	Clinical Practicum II Special Populations	0	9	3
				14	11	18
Total Required						36
>	<i>Major courses; a minimum grade of "C" or 2.0 is required</i>					
>>	<i>Major courses; a minimum grade of "C+" or a minimum grade of 77 is required</i>					

Key: C=Class hours; L=Laboratory; CR=Credit hours

Anatomy & Physiology and English Composition courses are offered every semester at NMCC and may be taken prior to beginning the Practical Nursing courses when the schedule allows.

**ALH 124 must be passed within 12 months or immediately prior to enrollment into NUR 106: Clinical Practicum I*

